



PRODUCT BULLETIN

Dump Body-Up Warning Indicator Kits

Dual Warning – Buzzer & Red LED Pilot Light

- Both Kits contain **Dual Warning Indicators (70dB Buzzer & Red LED Pilot Light)** to warn drivers of raised dump bodies, reducing the chances of overhead collisions with infrastructure.
- Mounts to the frame of the vehicle to warn the driver from a proximity when the dump body is raised.
- IP68 rated, the dual indicator has a working temperature range of -40°C to 85°C.
- Made with 304-Stainless-Steel housing for superior corrosion resistance and durability.
- Kits come complete with a dual indicating device (70dB Buzzer *and* a Red LED), user choice of style of switch (pre-installed on a mounting bracket with a pre-assembled Weather-Pack Connector), body-up switch stop set, a 20FT wire harness (also with a pre-assembled Weather-Pack Connector) in addition to hardware and accessories for **quick and easy installation**.



Both Kits are supplied ready-to-connect and install

Dump Body-Up Dual Warning Indicator Kits

Option	Kit Part#
Plunger Switch Kit with Weather-Pack Connector	*765555
Compact-Style Switch Kit with Weather-Pack Connector	*765554

AVAILABLE DECEMBER 2025

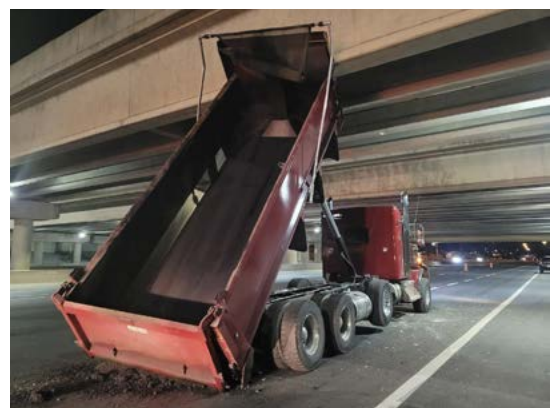


***765555**
Plunger Switch Kit



***765554**
Compact-Style Switch Kit

Here's what it prevents...



Plunger Switch
For Heavy-Duty applications



Compact-Style Switch
For Light to Medium-Duty applications or for applications where space is limited

Scan here to see how it works →

