



FOOD & BEVERAGE



EASTERN CANADA

3131 Pepper Mill Court
Mississauga, ON
L5L 4X6

T: 905.820.6150
F: 905.820.6142
E: sales@techspan.ca

WESTERN CANADA

8176 Winston Street
Burnaby, BC
V5A 2H5

T: 604.420.0425
F: 604.420.3149
E: westsales@techspan.ca

Customer Service: 1.800.363.1588

Wire and Cable Management

Stainless Steel Cable Ties

- 316 Stainless Steel
- Ball Locking mechanism provides ease of insertion and high tensile strength
- Chemical & Temperature Resistance: Acid and Alkali Resistant (-80°C to 538°C)



Metal Detectable Cable Ties

- Specially designed with a metallic impregnation in order to be more easily detected than a standard cable tie
- Up to 120lb Tensile Strength



Liquid Tight Connectors

- Liquid Tight Connectors are made of steel with a chromium zinc plating on the body, ferrule, locknut and clamp nut to prevent corrosion under the most adverse of conditions.
- Rated IP65, these connectors are UL Listed & CSA Certified with a watertight and oiltight design.



Non-Metallic Liquid Tight Conduit and Connectors

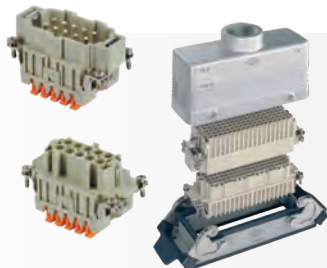
- Leak-proof integrity on motors, processing equipment, pumps, packaging equipment, and in marine applications.
- Flame retardant, oil, mild acid and ultraviolet resistant. With no metal core, product will resist fatigue from flexing and vibration.



Connection

Pin & Sleeve Devices

- Manufactured with non-leaching resins
- Screwless cable insertion on 20A and 30A models saves installation time, and a better connection than screwtype



Multi-Pole Connectors

- IP66 watertight seals and epoxy-polymer coating for resistance to aggressive environments.
- Stainless Steel latches for better corrosion resistance.
- Perfect for wherever high plugging frequency connections are required.

Control



Mechanical Interlocks

- Advance-GRP mechanical interlocks up to 125A
- IP66/67/69 protection against dust and water ingress
- Glass fiber Reinforced Polyester material for maximum resistance to impact, heat and fire.



AC & DC Disconnects

- We offer a comprehensive range of high-quality AC Isolators with switching capabilities ranging from 20A to 125A, both in 3 and 4 Poles.
- Fully Enclosed, Panel Mount, and DIN Rail Mount
- Handles can be locked in OFF position



Variable Frequency Drives

- The versatile and feature-rich SD1 is ideal for hundreds of different applications.
- The HD2 torque vector control range are packed full of features as standard that you would usually expect to find on considerably higher specified inverters.



Motor Control & Industrial Control Products

- Techspan carries a large range of Contactors, Thermal Overload Relays, Power Supplies, Motor Protection Circuit Breakers, Modular Heating and Lighting Contactors and more for your Control Panel needs.



Panel Automation and HMI's

- iSmart is an easy to use and highly cost-effective controller for small automation applications.
- iView HMI Advanced Controller comes standard with over 480 industry protocols.

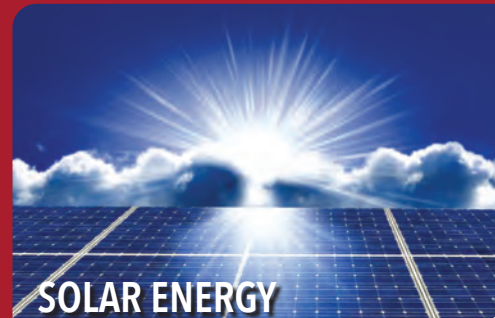


Timers and Relays

- IMO's comprehensive range of DIN Rail mountable Timers delivers up-to-the-minute technology.
- IMO's range of Panel Mount / Plug-In Timers provide users with a range of settings and functionality and timing ranges between 0.1sec and 100hrs.

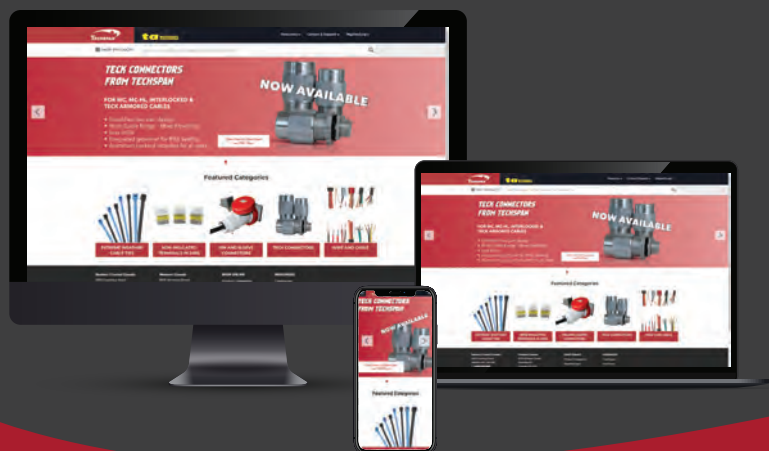


SINCE 1989, TECHSPAN HAS SUPPORTED...



USE TECHSPAN.CA TO FIND THE PRODUCTS YOU ARE LOOKING FOR.

Search over 10,000 products on our website and find your solution!



EASTERN CANADA

3131 Pepper Mill Court
Mississauga, ON
L5L 4X6

T: 905.820.6150
F: 905.820.6142
E: sales@techspan.ca

WESTERN CANADA

8176 Winston Street
Burnaby, BC
V5A 2H5

T: 604.420.0425
F: 604.420.3149
E: westsales@techspan.ca

Customer Service: **1.800.363.1588**